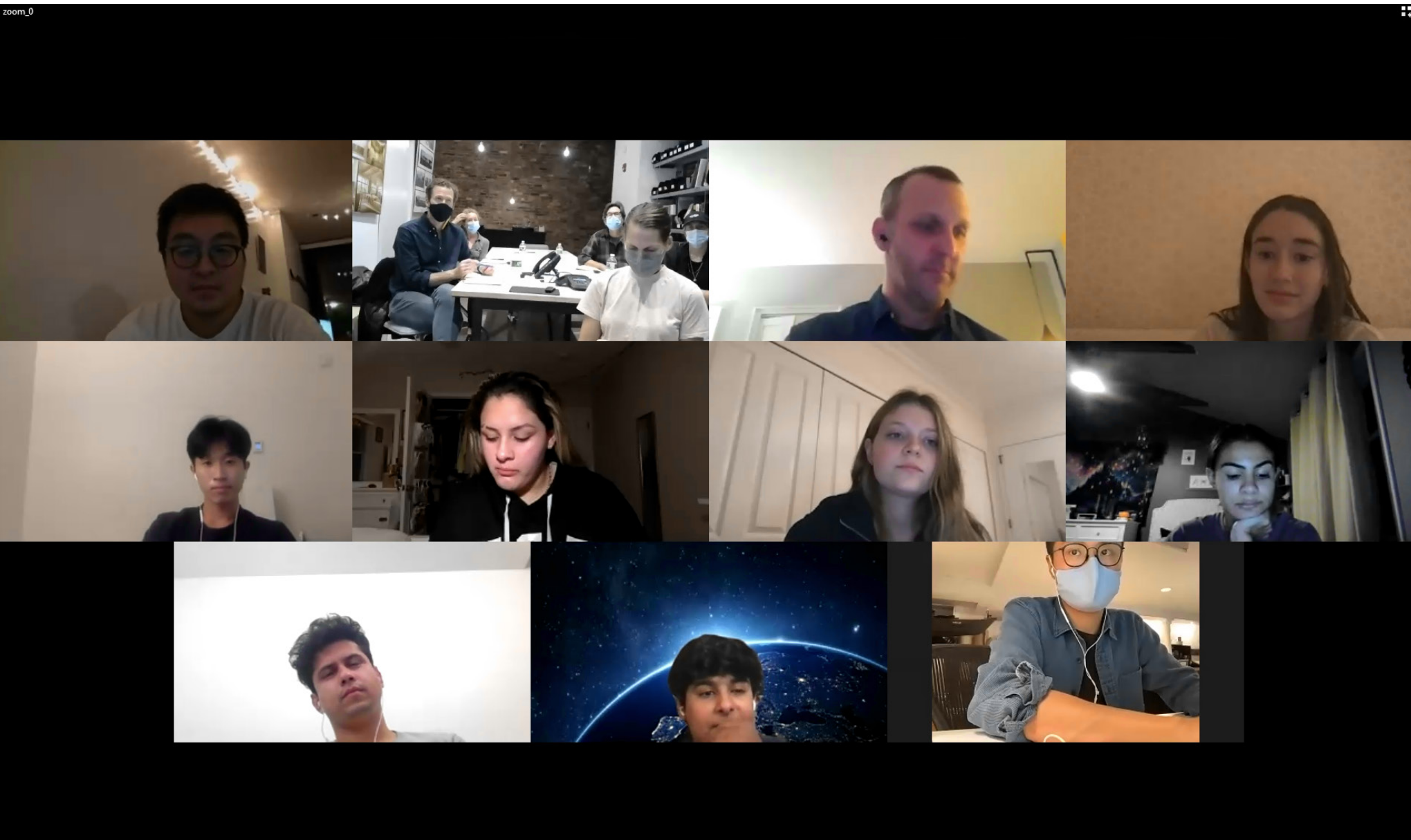


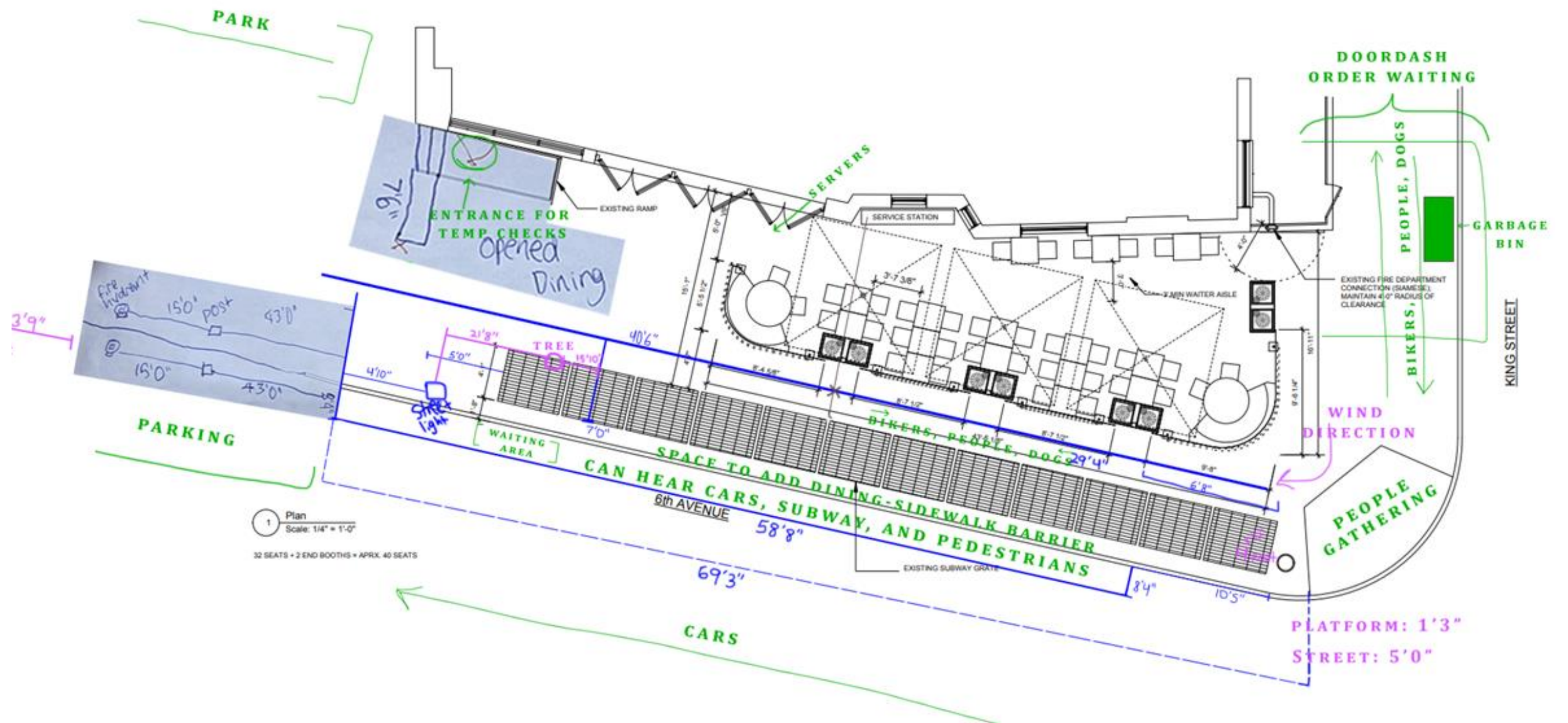


CURBSIDE DINING PAVILIONS

What began as a student project became a pair of dining pavilions to help a local chef weather the pandemic.



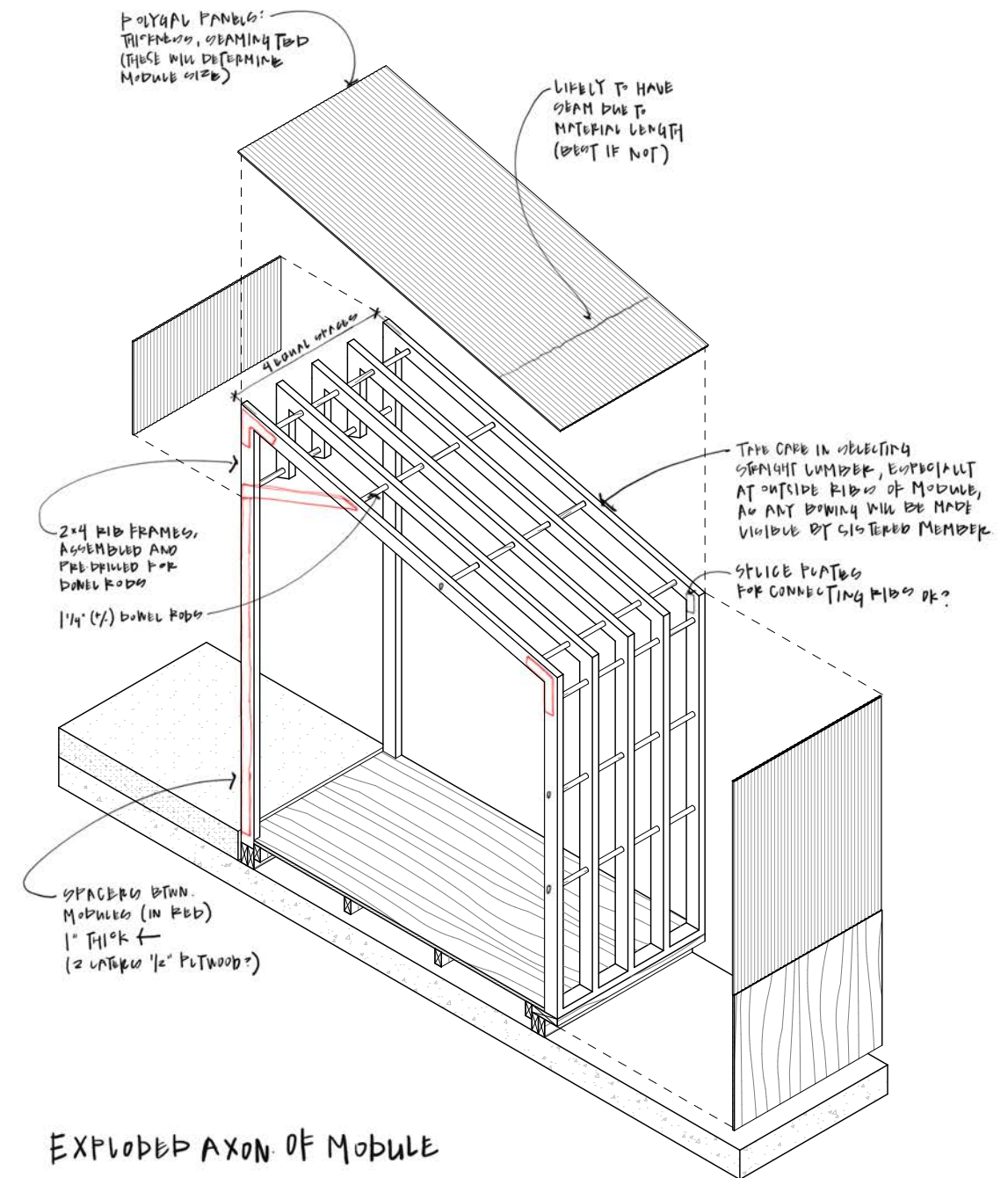
LSS collaborated with high school students from the Living City Project's CityLAB - a an after-school enrichment program to address the challenges and opportunities NYC is facing - to assess the needs of the restaurants' owners and management staff.



Working with the architecture team, the students helped research precedents through city walks, understanding the City's Open Restaurants program that expands outdoor seating options for restaurants and DOT guidelines, and gathering information in the field.



As the design team behind the interiors of Soho's Charlie Bird and Pasquale Jones, LSS wanted to ensure the restaurants' outdoor pavilions reflected the same refined, yet relaxed atmosphere.



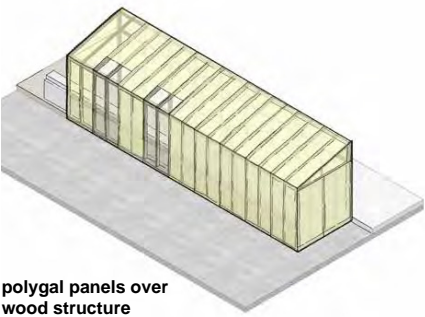
EXPLODED AXON. OF MODULE

MODULES CONSTRUCTED INDIVIDUALLY,
THEN ERECTED & FASTENED TO ADJACENT MODULE

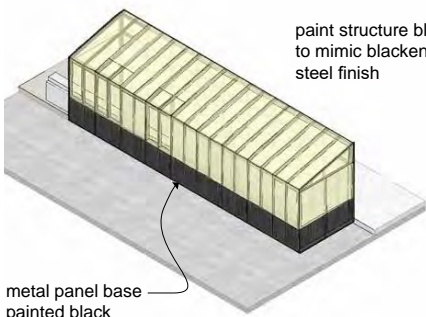
- PAVILION CONSTRUCTION SEQUENCE:
- ① PLATFORM FRAMING
 - ② STRUCTURE FRAMING & CLIPS
 - ③ FLOORING INSTALLED
 - ④ PLANTERS INSTALLED

The students gave feedback through Zoom presentations, and the design team settled on a design with repeated elements to simplify on-site construction.

TRANSLUCENT 'LANTERN'

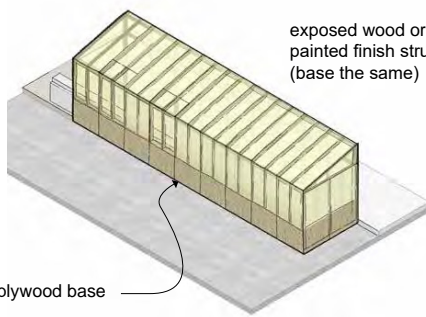


polygal panels over wood structure
+openings for ventilation or clear views depending on siting



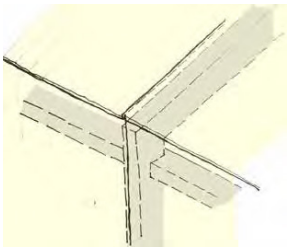
metal panel base painted black

paint structure black to mimic blackened steel finish



plywood base

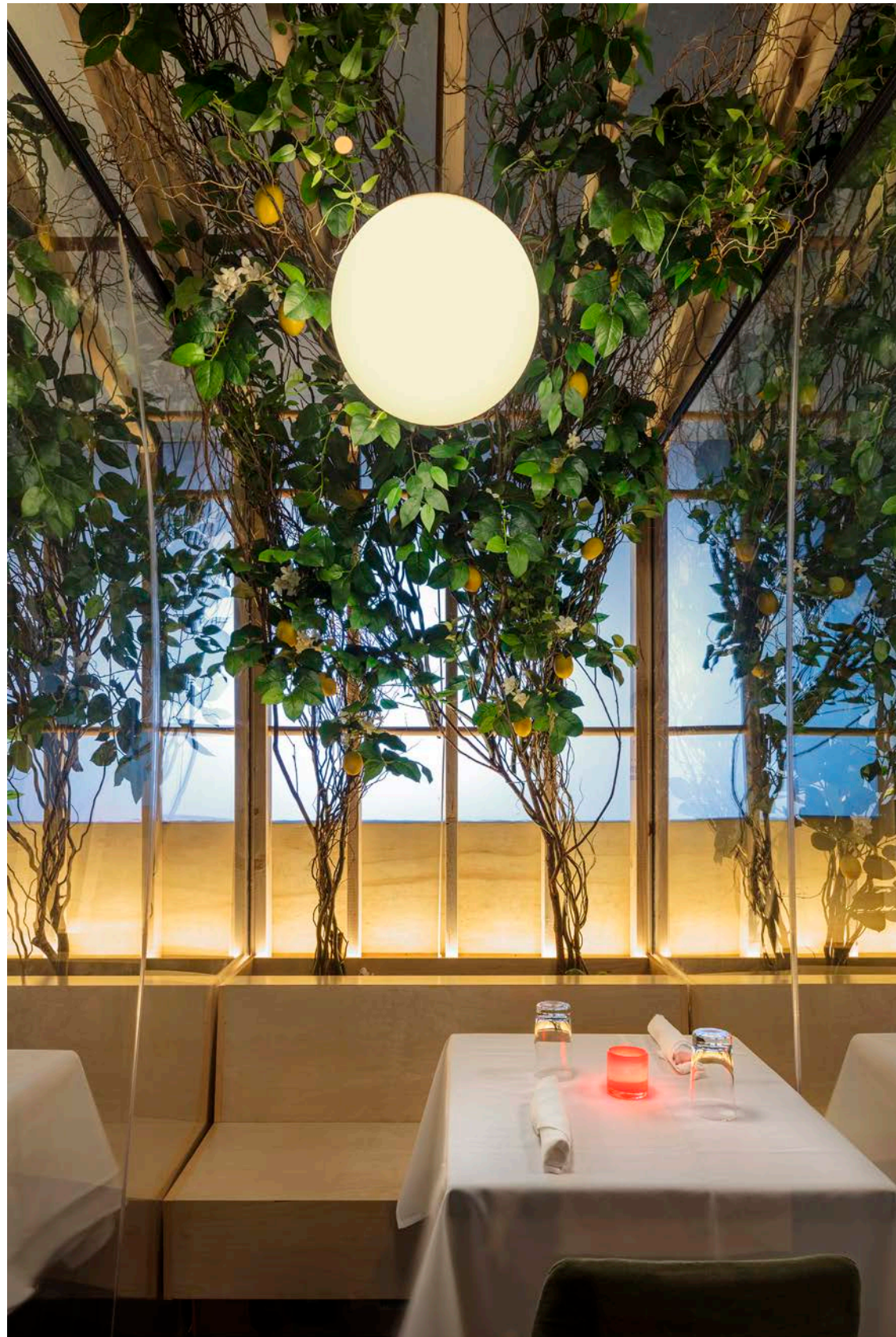
exposed wood or painted finish structure (base the same)



polygal panels to be butt jointed to create taut skin & minimal roof overhang



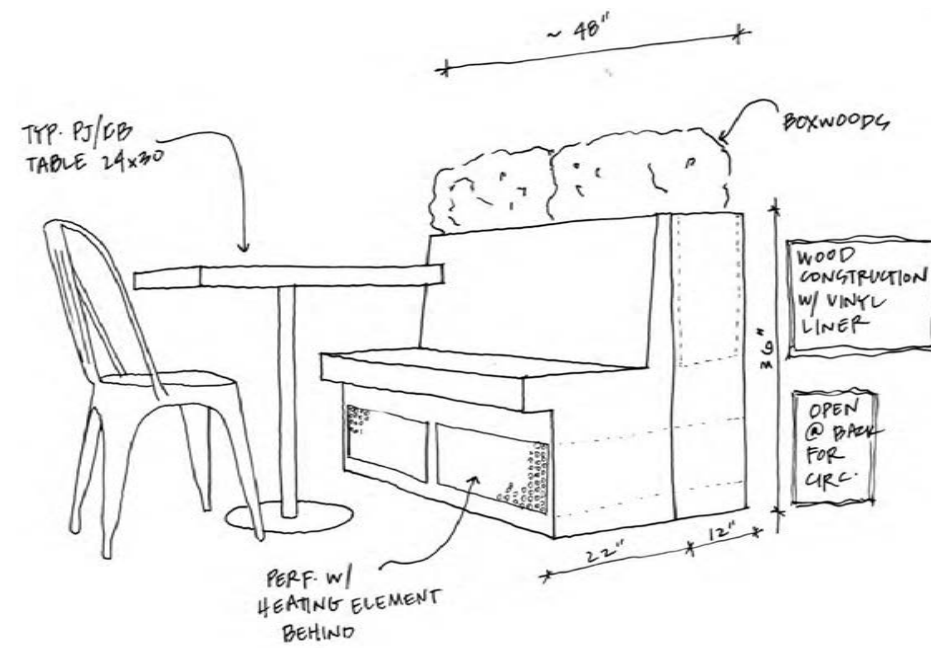
The pavilions become lanterns within the streetscape, offering a warm inviting place to dine.



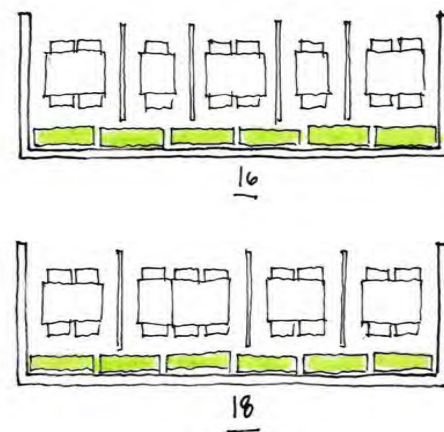
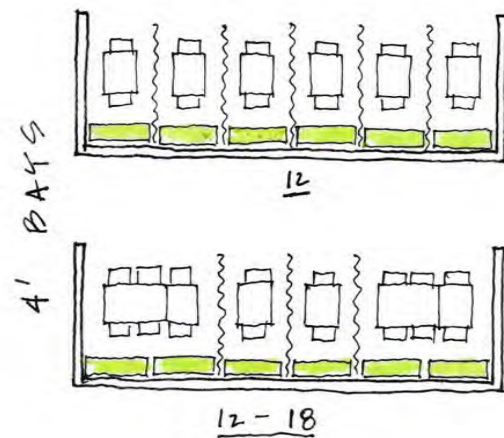
Elemental, bright, and cool, the pavilions' colors, textures, and elements echo the original restaurants' interiors.



The modular construction creates a crisp tectonic rhythm in counterpoint to the curtains, table linens, table settings, and the perimeter planting.

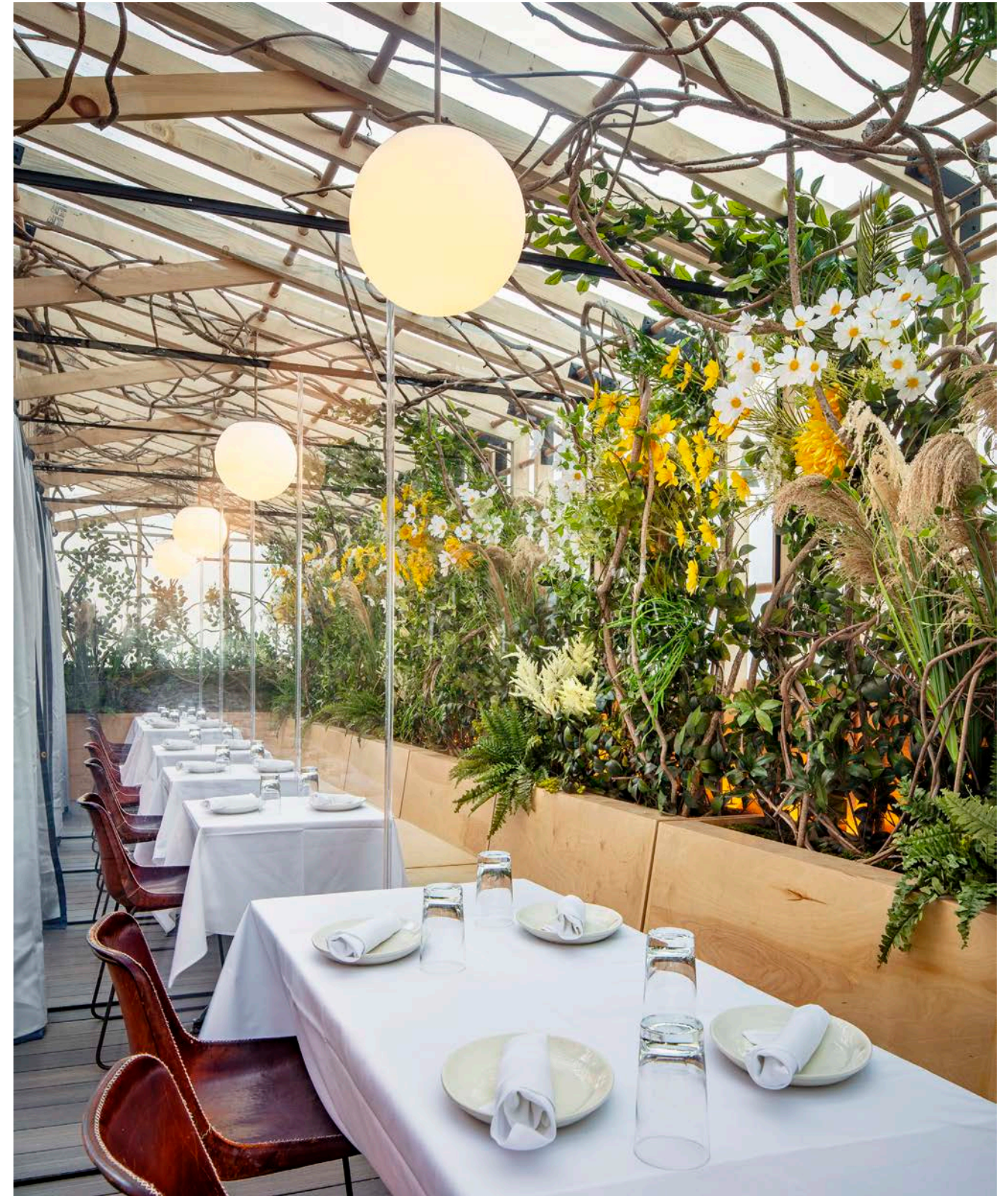


- GUIDELINES FOLLOWED:
- 24x30 & 42x30 tables
 - 24" behind table edge
 - 12" either side of table



"BREAKING THE BAY"
* BETTER FOR 4-TOPS *

PASQUALE JONES @ MULBERRY



Benches incorporate heaters, planters, a light trough, and when filled with sandbags, double as a ballast to meet DOT guidelines. Flexibility in the size of the dining pods, a critique by a CityLAB student early in the process, has already proved to be an important consideration.



As the seasons change, dividers, curtains, and frosted panels can be added or removed to adjust the amount of shelter, airflow, and privacy.